

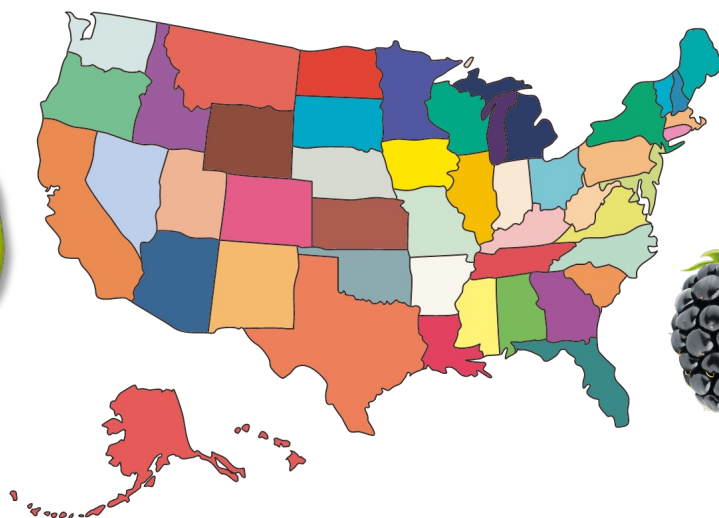
D I G I T A L M A G A Z I N E

LEARN⁺™ more

Farmers Market



E N R I C H M E N T



Farmers Market Index



[Apples](#)

[Avocados](#)

[Barley](#)

[Beans](#)

[Blackberries](#)

[Blueberries](#)

[Blue Crabs](#)

[Broccoli](#)

[Cabbage](#)

[Cantaloupe](#)

[Carrots](#)

[Catfish](#)

[Cheese](#)

[Cherries](#)

[Chilies](#)

[Clams](#)

[Collard Greens](#)

[Corn](#)

[Cranberries](#)

[Cucumbers](#)

[Eggs](#)

[Flax Seeds](#)

[Grapes](#)

[Honey](#)

[Jalapeños](#)

[Lentils](#)

[Lettuce](#)

[Lobster](#)

[Maple Syrup](#)

[Milk](#)

[Mushrooms](#)

[Oats](#)

[Onions](#)

[Oranges](#)

[Peaches](#)

[Pears](#)

[Peas](#)

[Pineapples](#)

[Popcorn](#)

[Potatoes](#)

[Pumpkins](#)

[Rice](#)

[Salmon](#)

[Soybeans](#)

[Strawberries](#)

[Sunflowers](#)

[Sweet Corn](#)

[Sweet Potatoes](#)

[Tomatoes](#)

[Wheat](#)

[Wild Rice](#)

[Sources](#)

Apples



Washington harvests **10-12 BILLION** apples each year.



If each apple was placed side by side, they would be able to circle around the earth **29** times.



2,500

varieties of apples are grown in the United States.

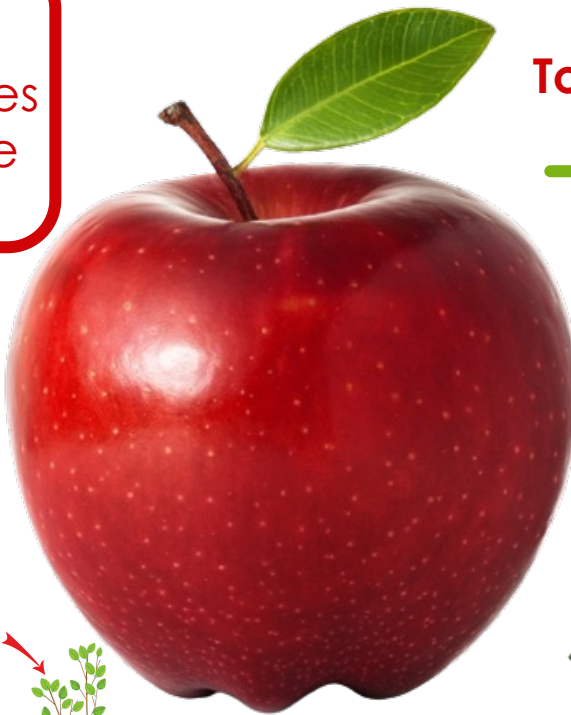


36

apples make **1 gallon** of cider.

Top **3** Apple Producing States:

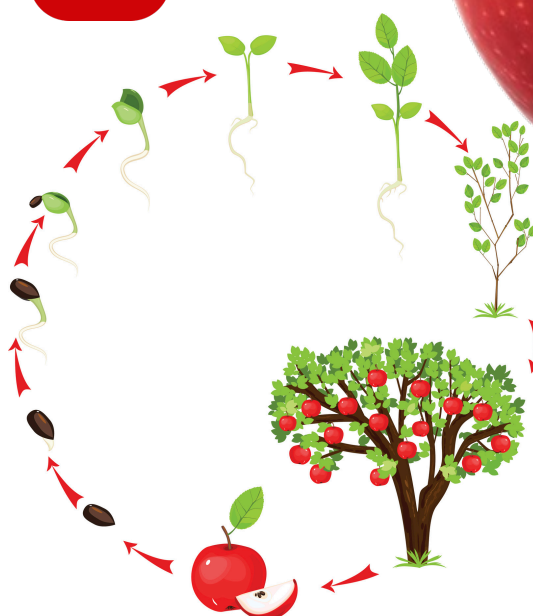
1. Washington
2. New York
3. Michigan



An **apple blossom** is the flower that comes from an apple tree.

An apple tree takes at least **4 years** to start producing fruit.

Most apples are still all **HAND-PICKED.**



Avocados



California produces around **400 MILLION** pounds of avocados per year.

California is the **LARGEST** producer of avocados in the U.S.

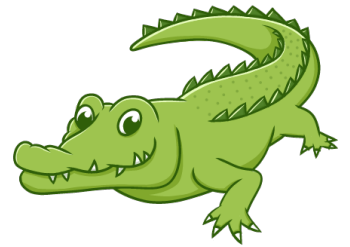
Avocado trees range from **30-60** feet tall.

Hass is the most popular variety of avocado.

An avocado tree produces **60 lbs.** of avocados/year.

Avocados have the **most** fiber of any fruit!

"Alligator Pears"

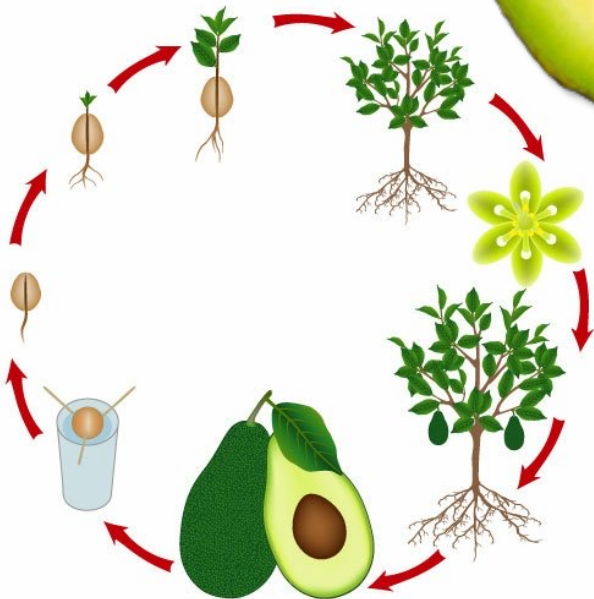
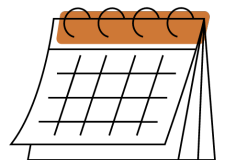


Avocados are a **FRUIT** – a "single-seeded berry".

It takes a minimum of a **YEAR** to grow an avocado.

In season **ALL** year long!

Avocados ripen **AFTER** they are harvested.



Barley



Barley is the **second** leading crop in Wyoming after hay.



The U.S. produces mostly **spring** barley.

Ways to Classify Barley:

1. Spring Barley
2. Winter Barley
3. 6-Row Barley
4. 2-Row Barley

Barley is one of the **oldest** domesticated grain crops.

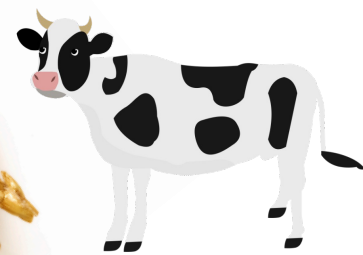
A **small** percentage of barley is milled into flour.



Barley is a cool-season, annual crop.



Barley is used as a feed grain for livestock.



The head of the plant is called the "**barley spike**" which is made up of 20 - 60 grains.

Barley is a **tall grass** with a stem that reaches between 30 - 35 inches high.



Beans



The most popular type of bean grown in Utah are **snap beans**.

Beans have been cultivated by humans for **6,000** years.

Snap beans are also commonly known as "string beans".



String beans can be **green**, **yellow** or **purple!**

Popular Types of Beans:

1. Green Beans
2. Kidney Beans
3. Pinto Beans
4. Lima Beans



The World's Tallest Bean Plant was over **45 feet tall**.



Equivalent to **3 fully-grown giraffes** stacked on top of one another.



Try growing some beans in your garden!

There are over **40,000** types of beans.





Blackberries



Oregon is the **#1** blackberry producer in the U.S.

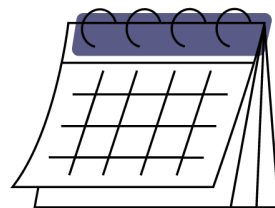
375 species of blackberries.

Blackberries are considered a **superfood!**

Oregon produces approximately **50,000,000** pounds per year!

The **trailing blackberry** (*Rubus ursinus*) is the **ONLY** blackberry species native to Oregon.

A blackberry plant can live for **15-20 years**.

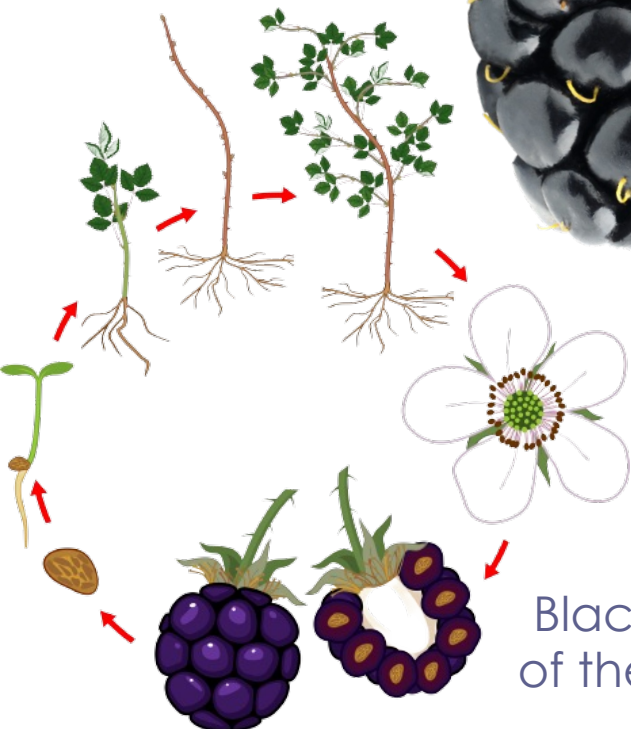


Blackberries are **aggregate fruits**.

There are around **80** "drupelets" on each blackberry.



Blackberries are a member of the rose family, **Rosaceae**.



Blueberries



NC produces 2 varieties:
Highbush and **Rabbiteye**.

The U.S. is home to around **102,000 acres** of blueberries.

4 Types of Blueberries:

1. Highbush
2. Lowbush
3. Hybrid Half-High
4. Rabbiteye

Blueberries are native to **North America**.

JULY

is National Blueberry Month!

Highbush blueberries are the most common.



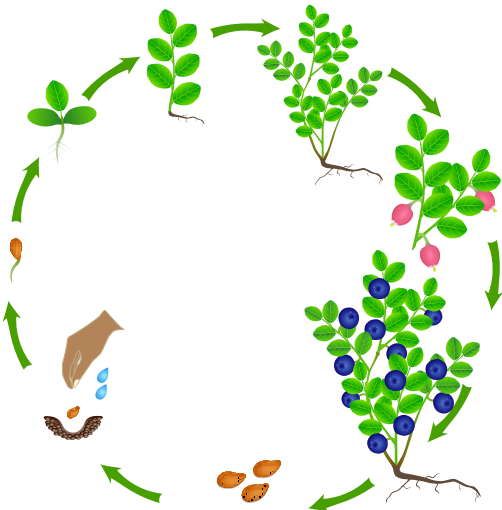
Blueberries are a **superfood!**



The **waxy coating** on blueberries is called "**bloom**."

1 blueberry bush can produce **6,000** blueberries/year.

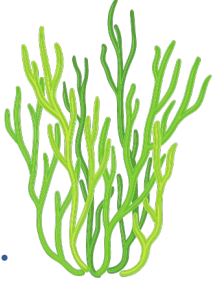
Lowbush blueberries are smaller & sweeter – perfect for making **jam!**



Blue Crabs



Half of the U.S. Blue Crab harvest comes from Maryland.



Blue crabs are “**bottom -dwellers**”.

Females have **red** on their front pincers, males do not.

Blue crabs **defend** themselves with these front pincers!

The blue crabs shell is called the “**carapace**”.

Blue crabs weigh **1 - 2** pounds.

Their shells can reach up to **9 inches** wide.



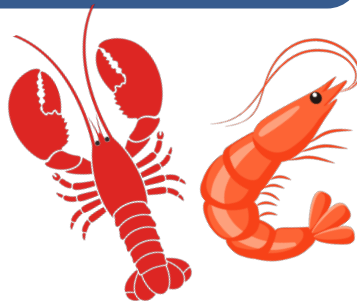
Blue Crabs **hibernate** through the winter months.

Mature female blue crabs are called “**Sooks**” and males are called “**Jimmies**”.

“**Swimmerettes**” Blue crabs have adapted over time to have their hind legs function like paddles to help them swim.

Very closely related to lobsters and shrimp.

Males tend to prefer **fresh water** over salt water.





Broccoli



California produces **90%** of the broccoli in all of the United States.

The word broccoli means **“the flowering top of a cabbage”**.

2 Forms of Broccoli:

1. Sprouting
2. Heading

Broccoli is made up of a bunch of tiny, unopened **flowers**.

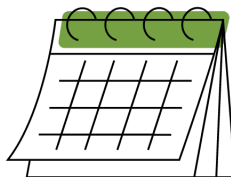


Broccoli is a **cool-season** vegetable.

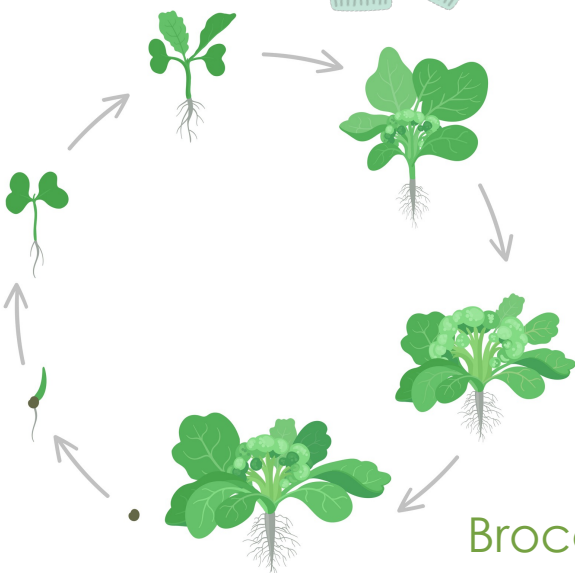


Heading broccoli is the most common.

Broccoli grows **BEST** during fall & spring.



Broccoli is harvested all by **HAND**.



Broccoli takes **70-140** days to complete growing after planting.



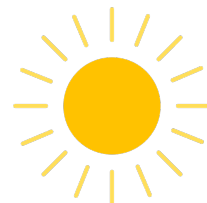
Broccoli is a part of the **brassica** family.



Cabbage



In Iowa, cabbage thrives when grown in the **fall**.



Cabbage grows best in a lot of **sunlight**.

Cabbage is one of the **OLDEST** vegetables in existence...it has been harvested for over **6,000** years!

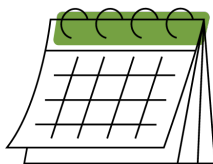
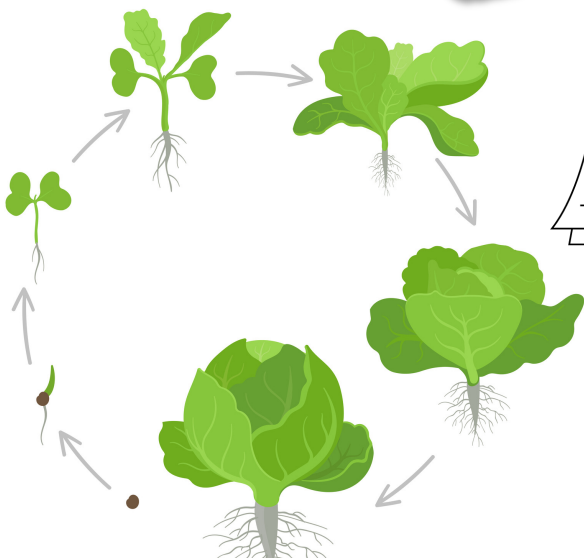
400+
varieties of
cabbage.

The average
cabbage plant is
4 - 6 feet tall.

Peak
season
is from
November
- **April**.



**Types of
Cabbage:**
1. Early
2. Late



Early cabbage takes **45 days** to mature, and late cabbage takes **87 days**.

The most
popular
varieties of
cabbage:

- 1. Green Cabbage**
- 2. Red Cabbage**
- 3. Savoy Cabbage**

Cantaloupe



Southwest IN's sandy soil & moderate climate is ideal for growing cantaloupe.

The most **popular** melon in the U.S.!

The actual name for cantaloupe is "**reticulated muskmelon**".

Cantaloupe are in season during the *summer* months of **July – September**.



Do **NOT** continue to ripen once they are picked from the vine.

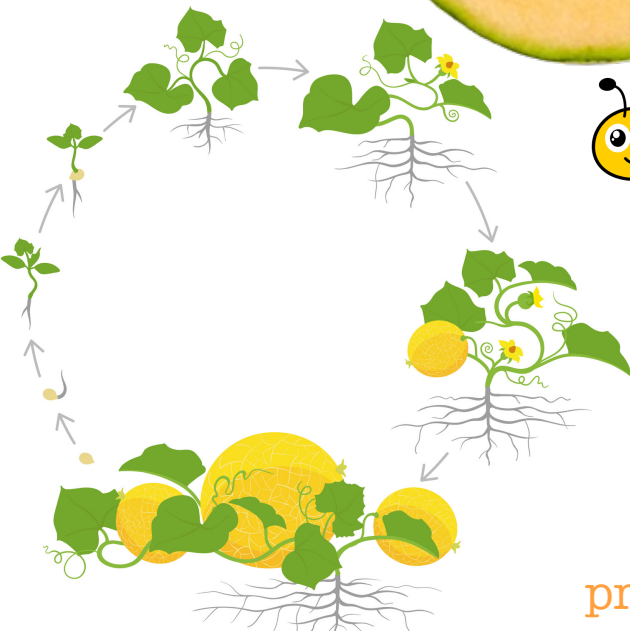


Their yellow flowers attract **honeybees** that pollinate the melon.



The vines that the cantaloupe is attached to can reach up to 5 ft long.

Cantaloupe take **90 days** to produce fruit after being planted.





Carrots



Carrots grown in Colorado tend to be **sweeter** because of the climate.

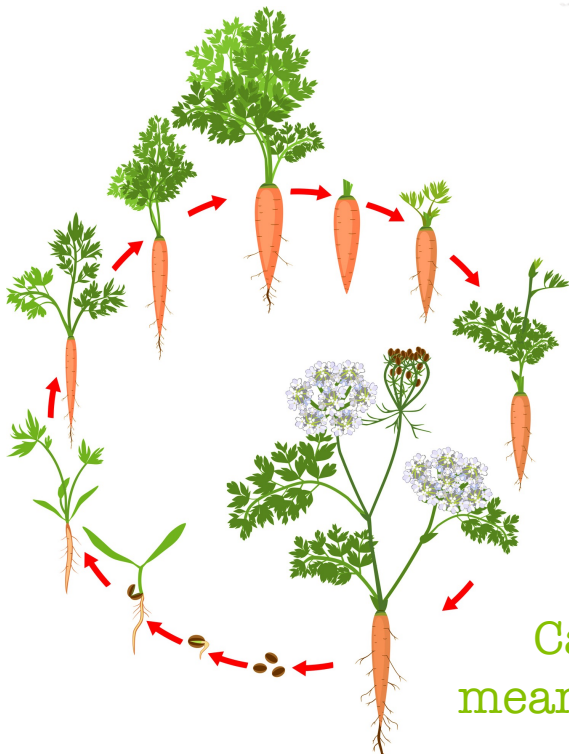
Carrots are
88%
water.

Carrots take
4 months
to complete
growing.



The **warmer days** and **cooler nights** allow for the carrots to **produce more of their natural sugars.**

Carrots thrive in overall **cooler** temperatures.



Carrots can survive entire **WINTERS** underground!

The world record for the longest carrot is over **19 feet!**

Carrots are **biennials**, which means they have a 2-year life cycle.



Catfish



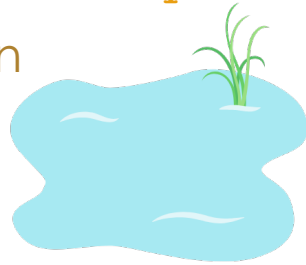
Mississippi is **ranked number 1** in the United States for catfish production.

Top **3** Catfish Farming States:

1. Mississippi
2. Alabama
3. Arkansas

Catfish **farming** is when catfish are raised in man-made and controlled ponds.

Wild catfish can be found in **freshwater** OR **saltwater**.

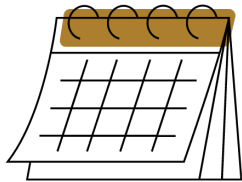


Mississippi makes up **55%** of the U.S. catfish farming.



Catfish thrive in **really cold** or **really hot** water.

Catfish can survive **8 - 20 years** in the wild.



3,000+ species of catfish.



Catfish got their name from their **cat-like whiskers**.

AUGUST is National Catfish Month!

Catfish nicknames:
Chucklehead,
Polliwog & Mudcat.



Catfish develop up to **4** pairs of whiskers.

Cheese



Wisconsin is the **#1 state in cheese production** – making 26% of U.S cheese.

Wisconsin produces A LOT of cheese each year...around **2 BILLION** pounds!

The United States is the **#1 cheese producing country** in the world.



Cheese is made by **curdling** milk.



Mozzarella is the MOST popular type of cheese worldwide.



On average a dairy cow will eat **90 pounds** of feed per day and enough water to fill a **bathtub!**

6 Major Breeds of Dairy Cattle:

1. Ayrshire
2. Brown Swiss
3. Guernsey
4. Holstein
5. Jersey
6. Milking Shorthorn

1.25 gallons of milk makes **1 pound** of cheese.



Dairy cows produce **5 - 6 gallons** of milk per day.

Cherries



Traverse City, MI is known as the **cherry capital** of the world!



2 types of cherries:
tart & sweet.



Michigan grows **70%** of all **tart cherries** grown in the U.S.

Cherry blossoms bloom on the trees in the **spring**.



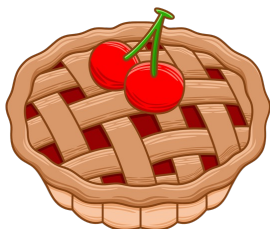
Cherry trees start to produce fruit **3 - 4 years** after planting.

Over
1,000
varieties.



An entire cherry tree can be harvested in just 7 seconds.

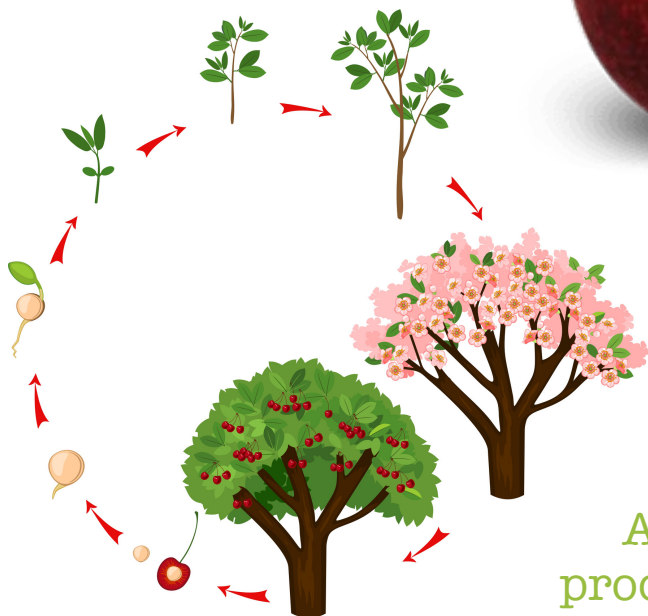
Tart cherries are most often used for **baking**.



Cherry trees can grow up to **33 feet** in height!

A typical cherry tree produces ~
7,000
cherries/year.

A cherry tree can survive and produce fruit for around **100** years.





Chiles



New Mexico produces the **most** chiles in the United States.

Chile peppers are a **fruit**.

Top **3** Chile Producing States:

1. New Mexico
2. California
3. Arizona

Chile peppers come in a variety of different colors.

Chile peppers thrive in **long, hot days** and **warm nights**.



Chiles are a part of the **nightshade** family.



The best way to cool down your mouth after eating a spicy pepper is with milk.



Capsaicin is the compound in peppers that make them spicy.



Ideally **8 - 12** hour long days.



The heat of chile peppers are measured on a **Scoville scale**.

Chiles get **spicier** the longer they ripen on the vine.



Clams



Massachusetts is the **largest** clam producing state in the nation.

Clams are **filter feeders** which is an animal that strains their surrounding waters of particles and debris.

Clams are **burrowing** mollusks that live in either marine or freshwater.



Over **15,000** species of clams found worldwide.



The clams found in Massachusetts are **marine** clams.

A small clam can filter **4 - 5 gallons** of water per day.



Most clam shells are only 1 to 2 inches wide.



Scientists can tell how old a clam is by counting the rings on its shell.

Pearls are very rare to find in clams...said to only be 1 in every 5,000!



Some clams can live to be over **100** years old!

Most clams spend their adult lives burrowed in **sand** or **mud**.

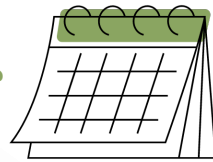


Collard Greens



Collard greens are the official **state vegetable** of South Carolina.

Collard greens are **tastier** & more **nutritious** in the colder months of **January - April**.



Collard greens take **6 - 8 weeks** to go from seed to ready for harvest.

A **cool-season** vegetable.



The stem can be **24 - 48** inches long.

“The Wild Cabbage Plant”

Popular Varieties of Collard Greens:

1. Blue Max
2. Georgia
3. Vates
4. Champion
5. Flash
6. Heavy

Collard greens are **biennials**, which means they have a **2-year** life cycle.



Collard greens produces small, yellow flowers.

These yellow flowers attract insects which is responsible for the **pollination**.



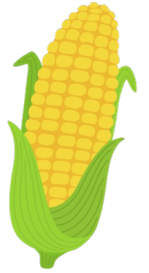
Collard greens are a type of **cruciferous** vegetable.



Corn



Nebraska harvests around **10 million** acres of corn each year.



Nebraska is nicknamed **"The Cornhusker State."**

Top **3** Corn Producing States:

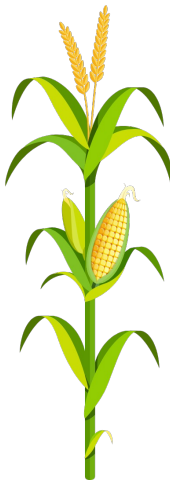
1. Iowa
2. Illinois
3. Nebraska

Corn is considered a **vegetable, fruit** AND a **grain!**



An ear of corn **ALWAYS** has an even number of rows.

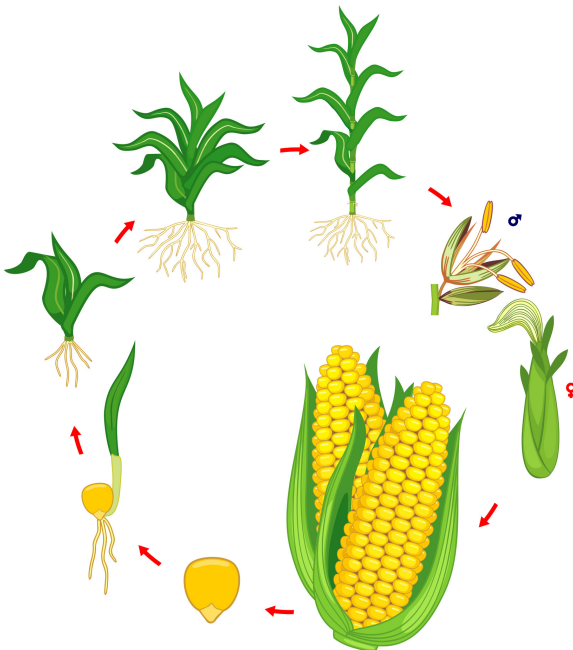
There are around **800** kernels on each ear of corn.



Most countries outside of the U.S. calls corn **"maize."**

90,000,000 acres of the U.S. are corn fields.

The # 1 field crop in the U.S.



Cranberries



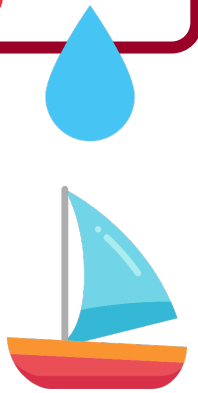
Around **60 MILLION** pounds of cranberries are produced in New Jersey each year.

Top **3** Cranberry Producing States:

1. Massachusetts
2. New Jersey
3. Oregon

Cranberries are one of the few fruits **native** to North America.

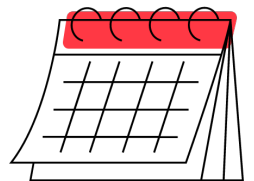
Cranberries are **90%** water.



Cranberries have small air pockets that allow them to float.

5% of cranberries produced are sold fresh. The rest are turned into **juice**.

Cranberries are typically in season from **October** to **November**.



20% of total cranberries consumed in the U.S. each year, are consumed the week of **Thanksgiving**.



Cucumbers



Both **pickling** and **slicing** cucumbers are grown in Virginia.



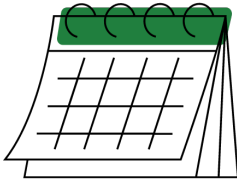
Cucumbers can be grown without the use of soil – this is called **hydroponics**.

Cucumbers are **90%** water.



Cucumbers take **12 weeks** to produce fruit after being planted.

60 million tons of cucumbers grown worldwide each year.



Cucumbers can grow up to **2 feet** long!



The large leaves on cucumber plants provide **shade** for the developing fruit.



Bees are **essential** for the pollination of cucumbers.



Eggs

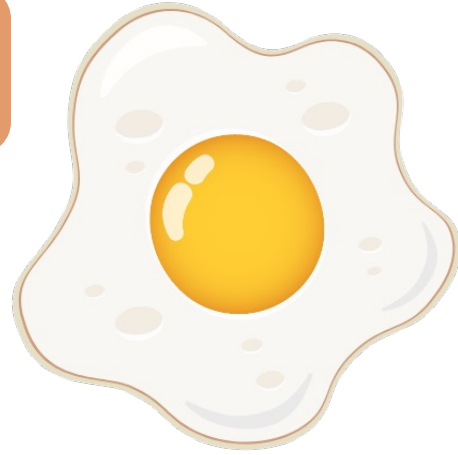


All **50** states in the U.S. produce eggs.

Eat
**FARM
FRESH**
eggs!

Components of an Egg:

1. Eggshell
2. Egg White (Albumen)
3. Egg Yolk (Vitellus)



Eggs with **brown** shells come from **larger** hens.

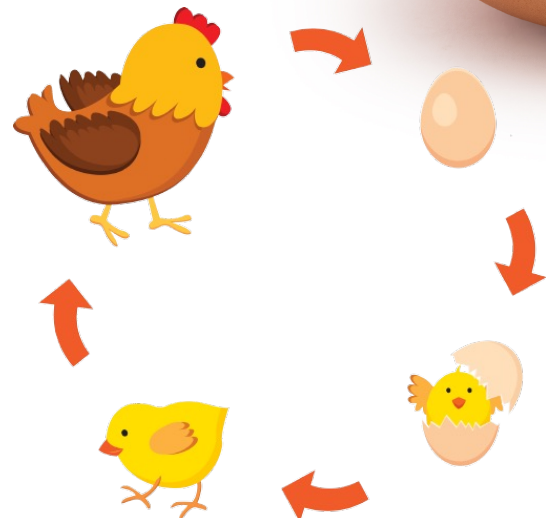
One hen can lay around **250** eggs per year.



An egg shell can have up to **17,000** pores - these pores allow moisture to pass through and keep bacteria out.

An egg shell and yolk **color** do not affect the taste or quality of the egg.

Eggshells in stores are commonly **white** or **brown**, but they can also be **blue**, **green** or **pink**!



Flax Seeds



Flax produced in South Dakota is mainly used for **feed, food** or **oil**.

Flax seeds can be **brown** or **yellow**.

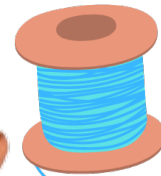
Top 3 Flax Seed Producing States:

1. North Dakota
2. South Dakota
3. Minnesota

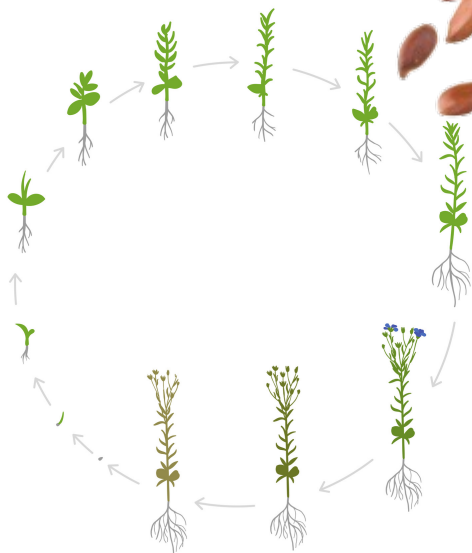
Flax was **first** used as a thread to make linens.

Flax seeds come from a **flax plant**.

Flax seeds are also known as "**linseeds**".



The blue color from the flax plant can be used to make **fabric dye**.



Flax grows best in cool climates that have long periods of daylight.

Flax is a **blue-flowering** plant.



Grapes



The **Norton** grape is the official grape of Missouri.

72

million

tons grown worldwide each year.



Colors of grapes: **red**, **green**, **white**, **black**, **purple**, **blue** & **gold**.

Over **8,000** types of grapes.



Grapes are a type of **berry**!

America's oldest grapevine is **400 years old**...located in North Carolina.



Grapes are in peak season in the United States from **August to October**.

1 grapevine produces around **40 clusters** of grapes.



Grapevines can reach up to **50 feet** in length.

1 grape cluster contains around **75 grapes**.



Honey



North Dakota produces the **MOST** honey in the U.S.



Climate of cool nights and warm days help flowers release **large** amounts of nectar.

Top 4 Honey Producing States:

1. North Dakota
2. South Dakota
3. California
4. Florida



To produce **1 pound** of honey, a colony of bees must collect nectar from **2,000,000** flowers.

MORE nectar = **MORE** honey!



The average honeybee produces only **1/12** of a teaspoon of honey in its lifetime.

1/12

60,000 - 80,000 honeybees in every beehive.



A typical beehives produces **30 - 100** pounds of honey a year.

Jalapeños



The jalapeño pepper is the **official state pepper** of Texas.

The heat of peppers are measured on a **Scoville scale**.

Jalapeños are usually around **2,000 - 8,000** Scoville heat units - making them a relatively mild pepper.

Jalapeño plants produce up to **25-35** peppers each.

Capsaicin is the compound in peppers that make them spicy.

Top 3 Jalapeño Producing States:

1. Texas
2. New Mexico
3. California

Jalapeños are actually **RED** when they are fully mature.

The more the jalapeños mature, the **spicier** they get.

Jalapeños have been to space! The Columbia Space Shuttle took them on their trip in 1982!





Lentils



Montana is the **#1 producer** of lentils in the United States.

Lentils are planted in **early May** & harvested **mid-August**.



4 Main Categories of Lentils:

1. Brown
2. Green
3. Red/Yellow
4. Specialty

Brown are the most common.

June - July, pale blue flowers grow on the leaves of the lentil plant.



A **drought** resistant crop.

Lentils are one of the **earliest** domesticated crops.

11,000 B.C.

Lentils grow **inside** the pods on the plant.

Lentils are a **"legume"**.

Lentils are most commonly eaten in **soups**.



There are **1-3** lentils per pod.

Lentils are a **short crop** – lentil plants never reach more than **2 feet** in height.



Lettuce



Between November – March, **90%** of America's lettuce is grown in Arizona.

Darker green lettuce leaves are **MORE** nutritious than lighter green leaves.

MOST

LEAST

Lettuce prefers to grow in **colder** climates.



Iceberg lettuce (also known as crisphead) is the **most popular** type of lettuce in the U.S.

Lettuce is a part of the **sunflower** family.



Lettuce is the **2nd** most popular vegetable in the U.S.

4 Main Types of Lettuce:

1. Butterhead
2. Crisphead
3. Looseleaf
4. Romaine



Lettuce is **95%** water.



Because of lettuce's water %, it must always be eaten **FRESH.**



Lobster



Maine is the **largest** lobster producing state in the nation.



Maine harvests **100+ MILLION** pounds of lobster each year.

If needed, lobsters are able to **regenerate** their limbs.

Maine lobsters are **all harvested by hand**.

“Crusher claw”

“Pincer claw”



The **minimum** legal size of a lobster that can be harvested is **3 inches**.



Lobsters are only **red** once they are cooked.

Wild lobsters can be **green, blue, yellow, grey** or even **multi-colored**.

Lobsters continue to **grow** throughout their entire life.

Lobsters can swim **backwards** just as well as they can swim forwards.

September 25

National Lobster Day



A lobsterman's workday usually starts at **4:30 am** and can go until **sundown**.



Maple Syrup



Vermont produces **over 50%** of the United States maple syrup.



Maple Sap Producing Trees:

1. Sugar Maple
2. Red Maple
3. Black Maple

A well cared for maple tree can live for up to **300 years!**

“Liquid Gold”



A single tree can produce up to **15 gallons** of sap per year.



40 gallons of maple sap = **1 gallon** of maple syrup.



Vermont has over **3,000 sugarhouses.**

A **sugarhouse** is where maple sap is taken to boil down into maple syrup.

3 types of maple syrup: **Golden, Amber & Dark.**



Amber maple syrup is the most common at the breakfast table.

Maple sap is collected during **late winter** and **early spring.**



Milk



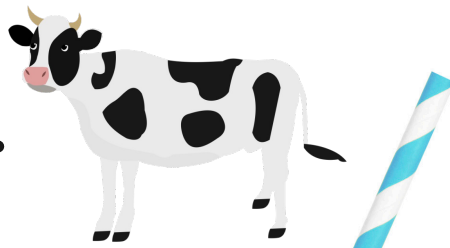
New Hampshire has **100** dairy farms and **11,000** dairy cows.

New Hampshire produces **1.4 MILLION** glasses of milk per day!

Nearly **98%** of U.S. dairy farms are family owned & operated.

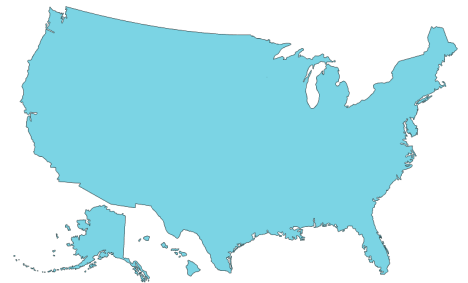
6

Breeds of Dairy Cows:



1. Ayrshire
2. Brown Swiss
3. Guernsey
4. Holstein
5. Jersey
6. Milking Shorthorn

ALL 50 states have dairy farms!



Holstein cows all have a **unique pattern of spots!**

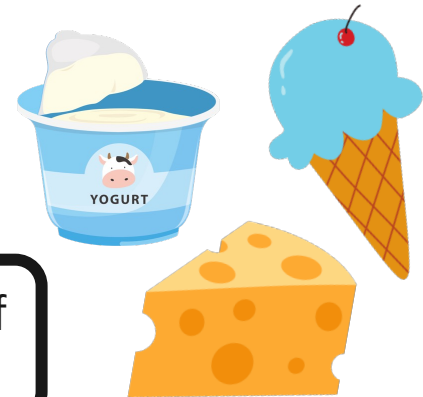
1 cow produces around **6 gallons** of milk per day.

The reason milk is white is because it contains "**casein**" - a type of protein.



Farmers measure milk in **pounds**.

The U.S. produces **~21 BILLION** gallons of milk each year.



Milk is the source of **ALL** dairy products!

Mushrooms



Pennsylvania produces around **500 million pounds** of mushrooms each year.

Top **3** Mushroom Producing States:

1. Pennsylvania
2. California
3. Texas

Umami – a primary taste found in mushrooms.



Pennsylvania produces over **65%** of the U.S. mushroom crop.

Popular types of mushrooms:
White Button, Crimino & Portabello.



These are all the **same** mushroom, just harvested at different ages.

Some mushrooms stay underground for **YEARS** waiting for the conditions to be just right to surface.

Did you know mushrooms are **not** considered a plant?

They are a **FUNGUS**.



Scientists have classified **2,189** mushrooms as **edible**.

Fungi are the **LARGEST** life form on earth.

Oats



The majority of oats grown in Oklahoma are used for **livestock feed**.

Oats are grown mainly in the **Midwest & northern** regions of the United States.

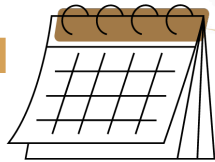
2 Kinds of Oats:

1. Husked
2. Naked

Oats are a **cool season** crop.

Oats are **planted** during the summer and early fall.

January is National Oatmeal Month!



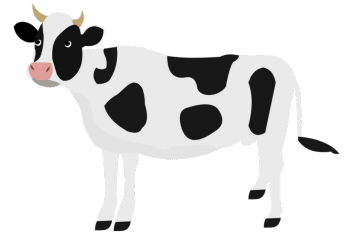
Oats are commonly rolled and made into **oatmeal**.

Farmers use a "**combine harvester**" to harvest the oats.



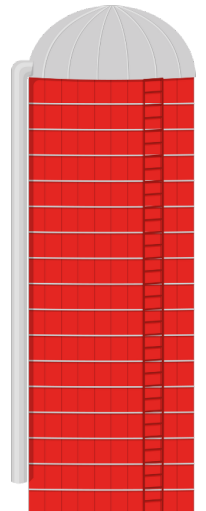
Oats are also used to make flour and alternative milk.

Farmers use oat straw as **bedding** for cattle & horses.



95% of oats grown in the U.S. are used for livestock feed.

Oats are stored in **silos**.





Onions



Mason Valley, NV is one of the best onion producing areas in the world.

Onions are most commonly, **red**, **white** or **yellow**.



Over **20** states grow onions.

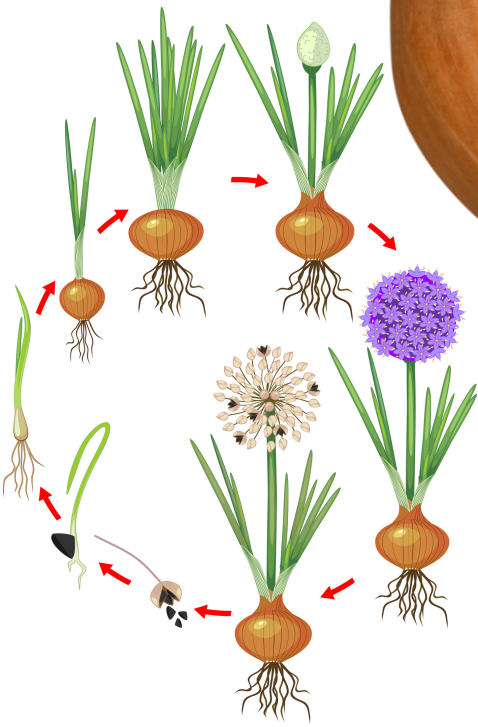
Onions are a part of the “**allium**” family.

Yellow onions are the **MOST** produced type of onion.



Over **75%** of all onions grown around the world are **yellow onions**.

Onions grow **underground!**



The **world record** for the **largest onion ever grown** was **over 10 pounds!**

125,000 acres of onions are planted in the U.S. each year!

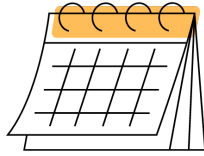
Oranges



More than **90%** of America's orange juice comes from Florida oranges.

3 Popular Types of Oranges:

1. Navel
2. Hamlin
3. Valencia



Orange season is 9 months long...
October - June!



600+
varieties
of oranges.

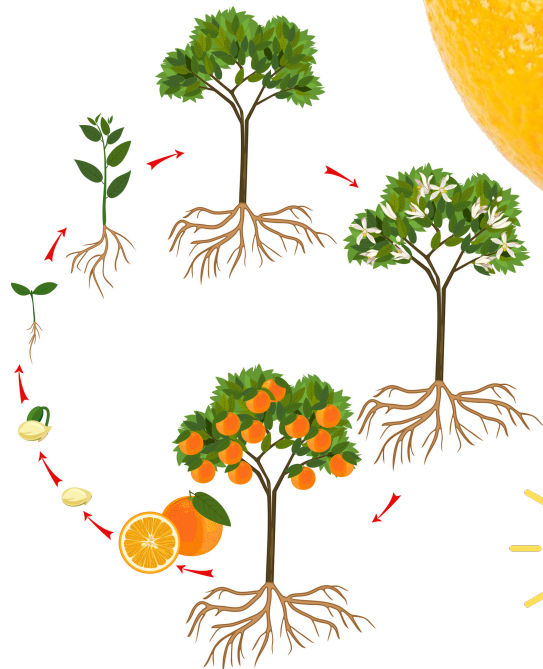
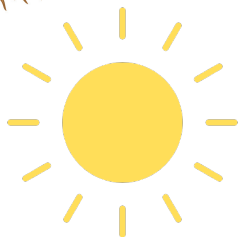
**Vitamin
C**

Most oranges are harvested by hand.



Sub-tropical areas are ideal conditions for growing oranges.

Oranges need a lot of **sunshine** and **warm** temperatures.





Peaches



Georgia's official nickname is "The Peach State".



Georgia produces around **130 million pounds** of peaches each year.

2 Main Varieties of Peaches:

- 1.clingstone
2. freestone



1 peach tree can produce up to **66 pounds** of fruit each year.

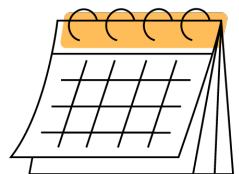
Peaches are in peak season from **June** - the end of **August**.

Once pollinated, peaches take **3-5 months** to reach harvesting point.

"Persian plum"



Peach trees can produce fruit for **12 years**.



Peach trees usually grow to be around **25 feet tall**.

Pears



New York's cooler climate makes for **ideal growing conditions** for pear trees.

Pears used to be called "**butter fruit**" because of their soft texture.



Pear tree **wood** is often used to make musical instruments.



Pears prefer to grow in **cooler climates**.



Over **3,000** varieties of pears.

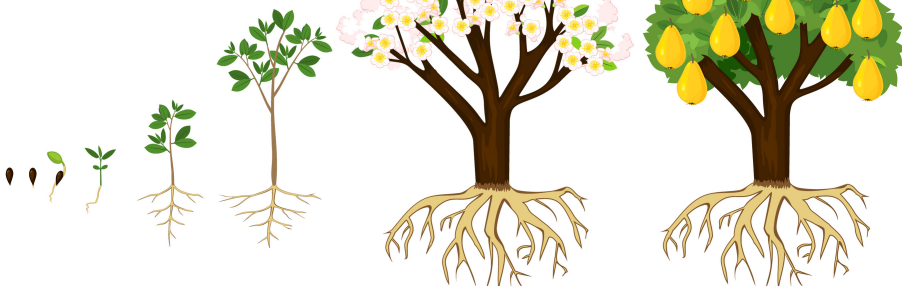
Top **5** Pear Producing States:

1. Washington
2. Oregon
3. California
4. New York
5. Michigan

Pears are a part of the **rose family**.



ALL pears are picked by **HAND**.



Common types of pears: **Anjou, Bartlett, Bosc, Comice & Forelle.**



Peas



Around **4,000 acres** of green peas are harvested in Delaware each year.

3 Main Types of Peas:

1. English Pea
2. Snow Pea
3. Sugar Snap Pea

When a pea pod is **ripe**, the pod will split in half.



Throughout the U.S. there are about **893,000 acres** of peas.



Pea pods grow to be around **4 inches** long.

Peas make a great snack!

The average pea weighs **0.1 - 0.3 grams!**



Peas are **cool-weather** crops that cannot tolerate the heat.

There are **5 - 10** peas in each pod. A fully mature pea is actually **yellow**.

Harvesting usually takes place **60 - 70 days** after planting.



Pineapples

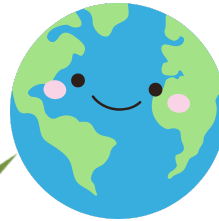


Hawai'i produces **1/3** of the world's pineapples.

The Dole plantation Pineapple Garden Maze in Hawai'i is the **largest maze in the world!**

“Hala Kahiki”

It can take up to **3 years** for a pineapple plant to fully mature before it begins bearing fruit.

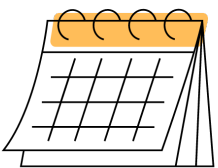


Pineapples ripen **faster** when **upside down**.

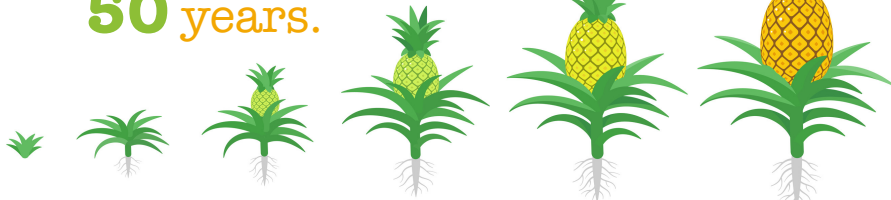


Then, it takes up to a year for the actual pineapple to grow.

Pineapples are in peak season from **March - July**.



Some pineapple plants can live for **50 years**.



Pineapples are made up of clusters of “**fruitlets**”.

“**Fruitlets**” are basically small, individual berries.

ONE pineapple plant produces only **ONE** pineapple at a time.



Popcorn



There are only two **popcorn museums** in the world, and they are both in Ohio!

Top 5 Popcorn Producing States:

1. Nebraska
2. Indiana
3. Illinois
4. Ohio
5. South Dakota

The U.S. is the number 1 **producer & consumer** of popcorn in the world.

JANUARY 19

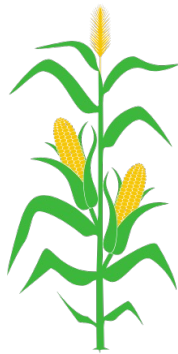
National Popcorn Day

Most popcorn is grown in the **Midwest.**

Popcorn is the **only** type of corn that pops!



Popcorn stalks can be up to **8 ft tall.**



Popcorn pops in 2 basic shapes: **butterfly** and **mushroom.**

Popcorn can pop up to **3 feet** in the air!



Today, many movie theaters make **more profit** off popcorn sales than movie tickets.



Potatoes



Idaho is the **largest** potato producing state in the U.S.



Top 3 Potato Producing States:

1. Idaho
2. Washington
3. Wisconsin

35% of potatoes are turned into French fries.



In 1995, potatoes became the first vegetable grown in **space!**



Potatoes are the **second** most consumed food in the U.S. after dairy products.

AUGUST 13

National Potato Day

Potatoes are also referred to as "**spuds**".

Potatoes are grown **underground.**

Potatoes are an **annual** plant.



Potatoes are a part of the **nightshade** family.



Pumpkins



The 'Pumpkin Capital of the World' is in Morton, Illinois.

Illinois harvests around **12,300 acres** of pumpkins every year.

Top 3 Pumpkin Producing States:

1. Illinois
2. Indiana
3. Ohio

The U.S. produces over **1.5 BILLION** pounds of pumpkins each year.

45+ varieties of pumpkins.

Pumpkins range in color from **red, yellow, green & orange!**



Pumpkins are grown on **EVERY** continent except Antarctica.

Pumpkins are **90% water.**



500 seeds/pumpkin.



80% of the U.S. pumpkin crop is available in **OCTOBER.**



Rice



Arkansas is the **#1 rice producer in the U.S.** harvesting 1,084,000 acres/year.

Top 5 Rice Producing States:

1. Arkansas
2. California
3. Louisiana
4. Mississippi
5. Missouri

Rice is grown on approximately **2.8 million** acres of land across the U.S.

Uncooked white rice will stay fresh & edible for **10-30 YEARS!**



White rice is just brown rice that has been polished of its outer bran layer.

Over **40,000** types of rice.



Steps to harvesting rice: **cutting, stacking, handling, threshing, cleaning & hauling.**

Rice plants can grow up to **6 feet** tall.





Salmon



Alaska is known for having some of the **BEST** salmon fishing in the world.

Pink salmon are the **smallest & most harvested** type of salmon in Alaska.

5 Species of Alaskan Salmon:

1. King (Chinook)
2. Red (Sockeye)
3. Silver (Coho)
4. Chum (Keta)
5. Pink

A **“keystone”** species.

The King salmon is **Alaska’s state fish.**



King/Chinook salmon are the **largest** species of salmon in North America.

Salmon can jump up to **12 feet** high!

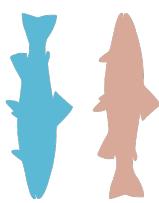
Salmon leap or jump through waterfalls & rapids.



Salmon are one of the **MOST** adaptable fish on the planet.



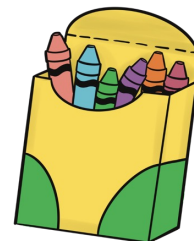
Salmon **anadromous**, meaning they can go from living in seawater to freshwater and back and forth.



Soybeans



Soybeans are Tennessee's number 1 **cash crop**.



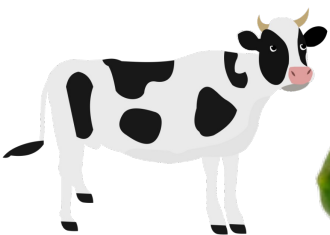
75 MILLION

acres of farmland are used for growing soybeans in the U.S.

One acre of soybeans can produce **82,368** crayons!

Soybeans are a part of the **legume** family.

Soybeans were first grown in the U.S. for **cattle feed**.



The U.S. is the **leading** country in soybean production.

“Miracle Bean”

Soybean pods usually contains **3 seeds** each.

Each soybean plant produces around **100** pods.

Soybean plants average **3 - 5** feet tall.



Strawberries



June-bearing strawberries grow best in Alabama's climate.



One acre of land can produce **50,000** pounds of strawberries.

3 Main Types of Strawberries:

1. June-bearing
2. Ever-bearing
3. Day-neutral

Strawberries are the **FIRST** fruit to ripen in the **spring**.

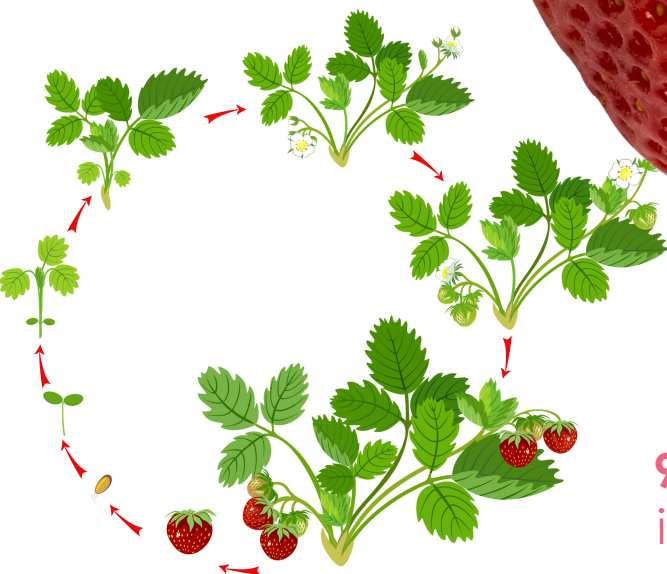
Peak strawberry harvesting season is **April - June**.

All strawberries are hand picked.

The average strawberry has **200** seeds.

Strawberries are the **ONLY** fruit with seeds on the outside.

90% of the strawberries grown in the U.S. are from **California**.



Sunflowers



Kansas is nicknamed
"The Sunflower State".

Sunflower
seeds are
a popular
snack for
baseball
players.



Sunflowers aren't *always*
yellow – they also can be
red, purple or **brown!**



The world
record for
TALLEST
sunflower
was 30
feet and 1
inch tall.

Sunflowers
symbolize
positivity.



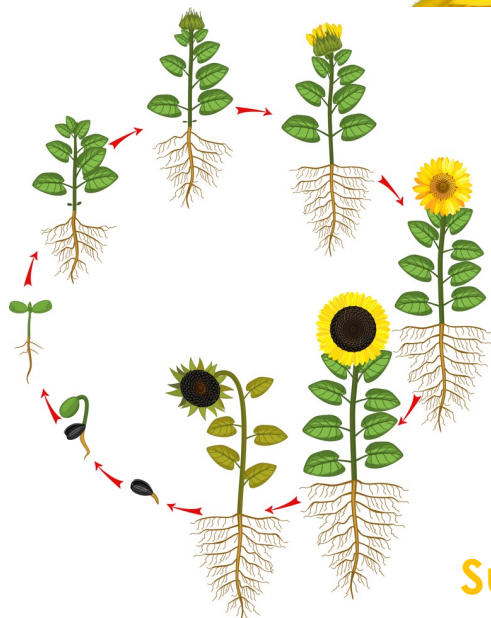
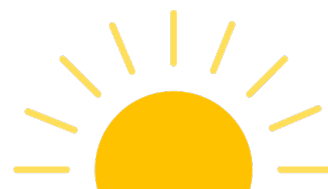
Sunflowers
are at **PEAK**
bloom in
mid-summer.



The head of
a sunflower is
made up of
thousands of
tiny flowers.

Young sunflowers
turn and face the **sun**
as it rises and then
continue to follow it
throughout the day.

Sunflowers follow the SUN!



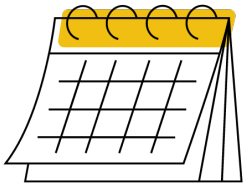
Sweet Corn



Sweet corn is one of Rhode Island's **top** commodities.



Sweet corn is in peak season from **May – September**.



All 50 states grow sweet corn – find some at your local farmer's market!

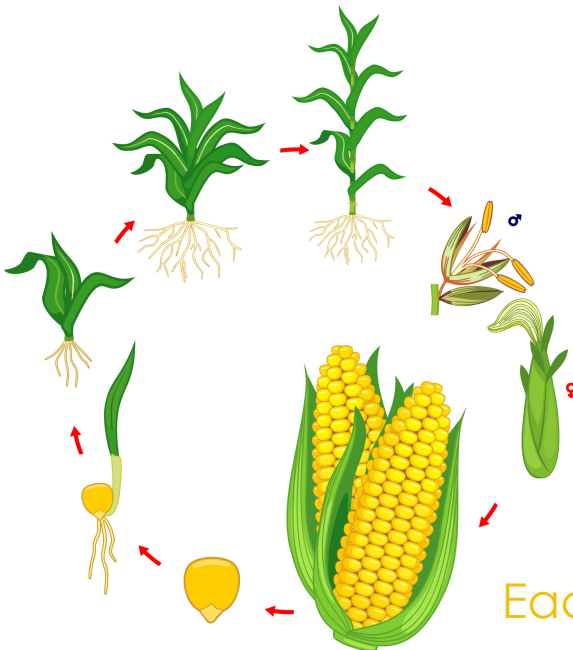
Sweet corn can be turned into syrup to be used as a **sweetener**.



Only **1%** of the corn grown in the U.S. is sweet corn.



1 bushel of corn can sweeten **400 cans** of soda.



Sweet corn is pollinated by the **wind**.

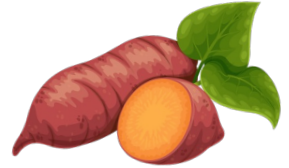
Sweet corn is the **ONLY** corn grown for **human** consumption.

Each stalk produces **1 - 3** ears of corn.

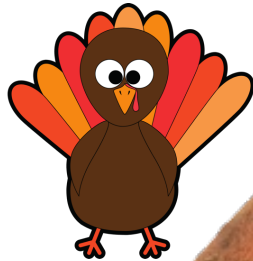
Sweet Potatoes



Sweet potatoes are Louisiana's **state vegetable**.



Sweet potatoes are a popular **Thanksgiving** side dish.



400+ varieties of sweet potatoes.

Sweet potato roots are harvested **90-120** days after planting.



Top **3** Sweet Potato Producing States:

1. North Carolina
2. Louisiana
3. California



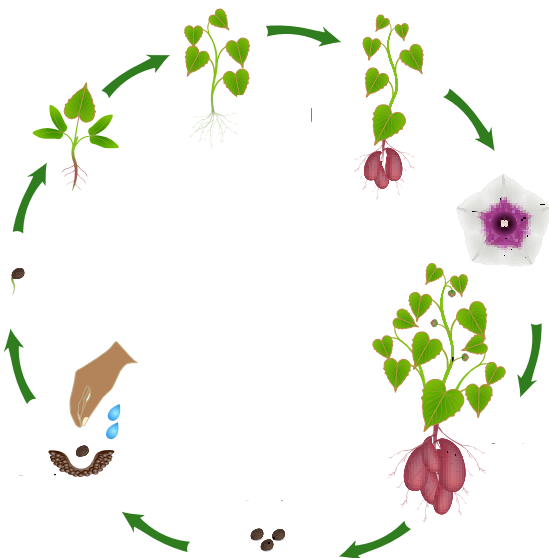
Jewel is the most popular variety of sweet potato.

Sweet potatoes are in season **year-round!**

Sweet potatoes are a **root vegetable**.

Orange sweet potatoes are the **sweetest**.

Sweet potatoes can be **orange, yellow, red, white** or **purple**.



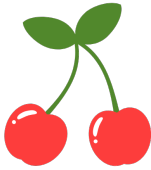
Tomatoes



The **Kentucky Beefsteak Tomato** is a sweet, late-season tomato.

3 Popular Types of Tomatoes:

1. Cherry
2. Grape
3. Roma



Tomatoes come in a variety of colors including **yellow**, **pink**, **purple**, **black** & **white**.



"Wolf peach"



Botanically, tomatoes are a **fruit!**

93% of

Americans grow tomatoes in their own garden.

Tomatoes are grown in **ALL** 50 states!

Over **10,000** varieties of tomatoes.

Tomatoes are at peak harvest **July - September**.

Tomatoes are a warm season crop that **love** the sun.



Wheat

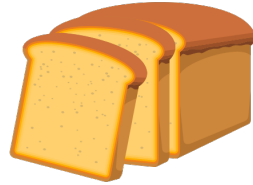


42 states in the U.S. grow wheat, West Virginia being one of them!



6 Classes of Wheat Grown in the U.S.

1. Hard Red Winter
2. Hard Red Spring
3. Soft Red Winter
4. Soft White
5. Durum



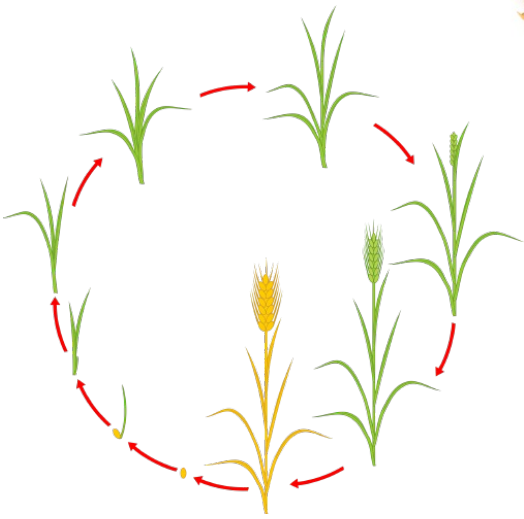
1 bushel of wheat can produce **90 loaves of bread.**

Hard Red Winter wheat is used mostly for making **breads.**

1 acre = 40 bushels of wheat.

The average wheat crop grows to be between **2 & 4 feet tall.**

Wheat grows best in **warm** weather.



Wheat is the **MOST** harvested crop in the world.

Wild Rice



Minnesota is the #1 wild rice producer in the U.S.



Wild rice is Minnesota's **official state grain**.

Top 2 Wild Rice Producing States:

1. Minnesota
2. California

Wild rice is technically a **“water-grown grass seed.”**

In Minnesota, wild rice harvesters must be licensed to gather the grain and must do it in the traditional, Native American way.



Wild rice can pop like **popcorn!**



Sometimes referred to as **“water oats”**.

Wild rice can grow up to **8 feet** out of the water.

Wild rice grows naturally in **waterways** in almost every state.



A G R I C U L T U R A L



[Student Center](#)

[Teacher Center](#)

[Get Involved](#)

AgBadging and Games



Explore the best resources online to increase what you know about agriculture.

State Agricultural Facts



Learn more about agricultural production in all 50 states!

Ag Today



Explore the connection between you and agriculture! Translation: The connection to the stuff you use every day!

Career Seeker



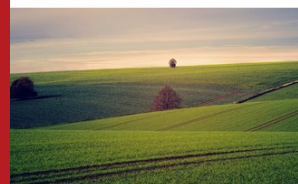
Consider all the careers in agriculture. These jobs make a difference in the way we live - our food, clothing, shelter, health, and our environment!

Ag Smarts



Check your Ag Smarts, compete with your friends, and learn more about where you get the stuff you use every day.

Virtual Tours



Can't get to a farm? Take a virtual tour!

WHAT IS AGRICULTURAL LITERACY?

A person who understands and can communicate the source and value of agriculture as it affects our quality of life.

L I T E R A C Y